



# VetCheq® - Instant and Continuous Equine Health Information

## What is VetCheq®

VetCheq® is a simple to use, progressive, diagnostic product for horses that gathers, analyzes, and transmits vital data via Bluetooth, through the PonyUp® cloud, to any smart device anywhere on the planet. Data is gathered non-invasively and stored or viewed in streaming, real-time mode. Cardiac function, which includes central blood pressure, pulse, respiration, and an EKG equivalent readout is displayed digitally or graphically at the user's discretion.



## How VetCheq® Works

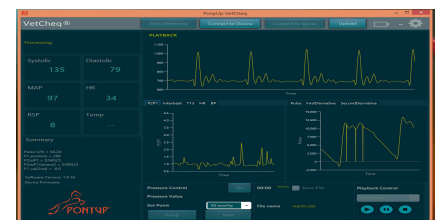
The VetCheq® unit is placed inside a specialized wrap boot that is positioned on the horse's front leg. The inner surface of the boot has a replaceable bladder that sits directly over the distal artery. The bladder is connected to the device via a tube, which serves the dual purpose of maintaining pressure in the bladder and allowing the pulse wave from the artery to be sent to the sensor in the VetCheq® device for analysis.

An ARM7 processor, inside the waterproof VetCheq® enclosure, reads the collected raw data, performs the initial analysis, and either stores or transmits the data via a Bluetooth link. The data can be transmitted to another Bluetooth device or to a device that converts the data to WiFi and sends it to the PonyUp® cloud application to be accessed by anyone with permission to view the data.

Users can logon to the [VetCheq® Cloud](#) application from any location to access data on all the horses in their care.

As the owner (administrator) of one or more VetCheq® units, you will be able to set thresholds that generate SMS text or audio alerts, assign guests who can share the information, and store collected data to use in the future to compare to current data.

The data is analyzed and transformed into readable information that can be accessed on any smart device that is either Bluetooth enabled or connected to the internet. The data can be viewed as live, streaming data, or as time-stamped, historical data.



*Improving Equine Diagnostics*

# What Makes VetCheq® Unique

VetCheq® was designed and developed to replace an arterial catheter. It provides real-time data about cardiac function, which includes central blood pressure, pulse, respiration, as well as an EKG equivalent readout.

The product is conveniently portable and can be used in a surgical environment or in an emergency field surgery. Unlike a conventional arterial catheter, VetCheq® can remain on the horse during recovery allowing the caregiver to monitor continuously until the horse is declared out of danger.

*VetCheq® is so accurate that it is the only device to use technology that has been FDA approved for continuous blood pressure monitoring.*

*VetCheq® is also the only device that can safely monitor a horse while it is in an MRI.*

## What Benefits Does VetCheq® Provide

The device provides early detection of illness, which encourages early intervention and results in a better long-term prognosis. VetCheq® allows the caregiver the opportunity to closely and precisely manage the health and wellbeing of their equine athletes while providing cost savings, peace-of-mind, and an enormous competitive advantage.

## Who Should Use VetCheq®

VetCheq® is professional, affordable diagnostic equipment meant for equine veterinarians, equine surgeons and those involved in teaching and equine research at universities. VetCheq helps clinical practices better manage their patients, avoid unnecessary emergencies, reduce liability and provide a healthy ROI.

## When to Use VetCheq®

The device can be used in a multitude of scenarios, and across disciplines, to ensure the wellbeing of horses under supervision. VetCheq® proves valuable in situations that include:

- Surgery and ICU stalls
- At home post-surgical recovery
- Transport and quarantine
- Equine research
- Pre-purchase exam
- Equine rescue
- Treatment monitoring
- Pain management



## Where Can You Buy VetCheq®

Equine Veterinarians can purchase VetCheq® units through your Henry Schein sales representative.  
[www.henryscheinvet.com/](http://www.henryscheinvet.com/)

Distributed By:

 **HENRY SCHEIN®**  
ANIMAL HEALTH